

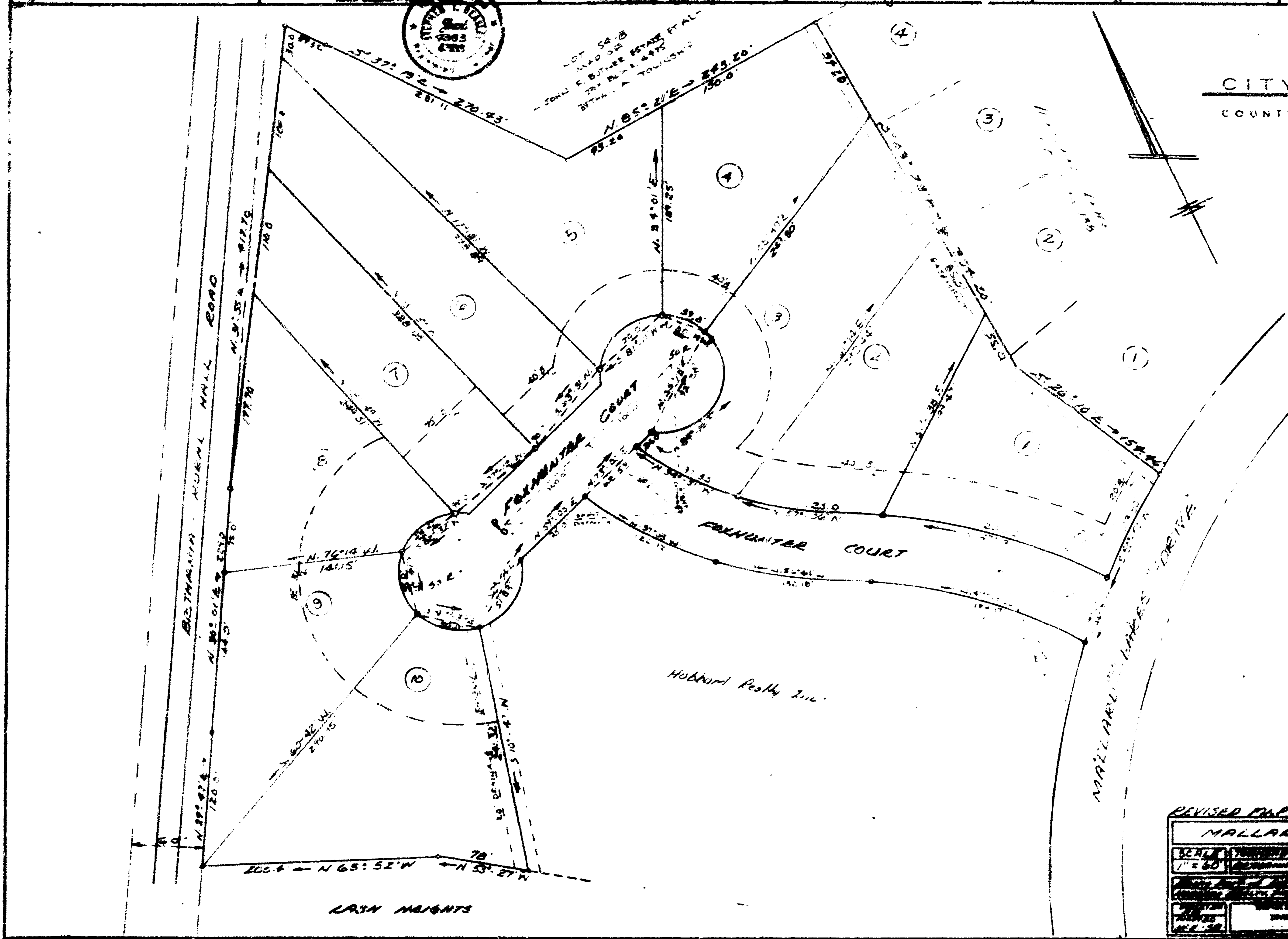
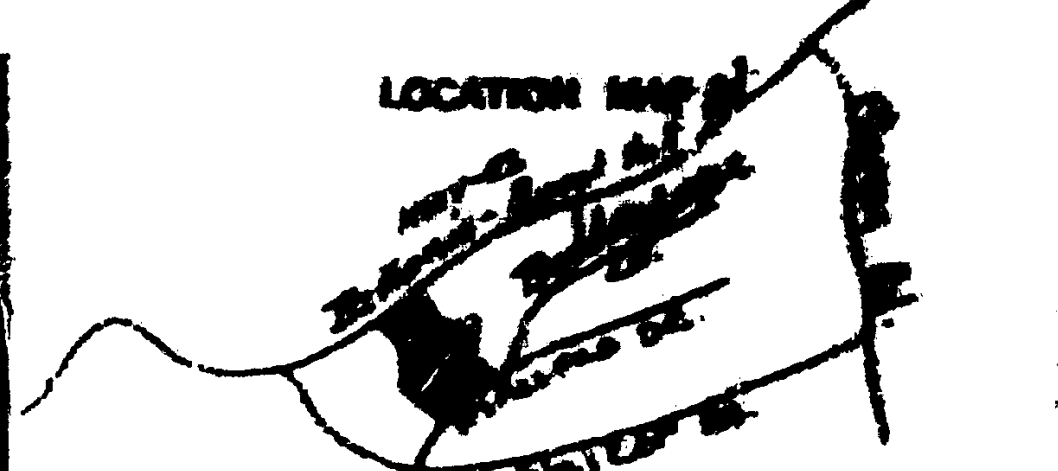
FINAL APPROVAL
 21d September 24
 John A. Donnelly

Stephen T. Beasley
 1974
 15 11/25 1974

Bethie S. Slaughter
 1974
 15 11/25 1974

Filed for registration on 4-48
 September 3 1974
 Filed for registration on 4-48
 September 3 1974

LOCATION MAP
 1974
 15 11/25 1974



CITY-COUNTY PLANNING BOARD
 COUNTY OF FORSYTH AND CITY OF WINSTON-SALEM, N.C. 27101

Mrs. Anne Ayers
 Director of Leads
 Forsyth County Courthouse
 Third and Main Streets
 Winston-Salem, N.C.

Subject: Mallard Lakes Annex Subdivision

Dear Mrs. Ayers:

Mallard Lakes Annex Subdivision recorded 2 August 1974 in Plot Book 25, Page 139, has been reexamined by the planning staff at the request of Mr. Stephen Beasley and approves the following changes to the original plat:

- (1) Lot lines between lots 3 and 4 (formerly running N. 66° 47' E. for 91.86 feet and thence N. 55° - 42' E. 145.20 feet) has been changed to run N. 65° - 47' E. for a distance of 249.40 feet.
- (2) Lot lines between lots 4 and 5 is connected from running N. 27° - 31' E. for 100.00 feet to run N. 24° - 21' E. for a distance of 143.35 feet.
- (3) The lot line between lots 4 and 5 is changed from running N. 45° - 10' W. for a distance of 140.00 feet to running N. 70° - 14' W. for a distance of 141.15 feet.
- (4) That the lot lines between lot 8 and 11 be changed from running S. 71° - 52' W. for a distance of 177.65 feet to running N. 40° - 42' W. for a distance of 250.15 feet.

A copy of the Mallard Lakes Annex map as amended, given final approval this day by the Planning Board and signed by me, representing the original recorded plat is attached herewith for recording.

If I can provide further information, please do not hesitate to contact me.

Sincerely,
 John A. Donnelly
 Director of Planning

cc: Mr. Paul Driver
 Mr. Stephen Beasley

REVISED MAP - ORIGINAL RECORD PAGE 139

MALLARD LAKES ANNEX

SCALE: 1" = 60'

DATE: 11/25/74

BY: [Signature]

FOR: [Signature]